



160

West Santa Clara

RETURN. RECHARGE. REFOCUS.



CUSHMAN &
WAKEFIELD

CENTURY | URBAN

160 WEST SANTA CLARA

A sophisticated and distinctive office building located in the heart of downtown San Jose, 160 W Santa Clara is a 16-story Class A property rich with modern indoor amenities and ample parking. With $\pm 228,588$ SF of expansive workspaces there are no shortages of places for great ideas to come to life.

AVAILABILITY

SUITE	SIZE	AVAILABLE
1050	$\pm 2,717$ SF	NOW
525	$\pm 5,750$	NOW
400	$\pm 6,610$	NOW
101/102	$\pm 8,306$	NOW
900	$\pm 11,585$	NOW





HIGHLIGHTS



RENOVATED LOBBIES & ELEVATORS



WORLD CLASS TENANT AMENITY CENTER & CONFERENCE / TRAINING CENTER



ON-SITE FITNESS, YOGA & WELLNESS CENTER



SUPERIOR PARKING



HEALTH & WELLNESS WITH TOUCHLESS FIXTURES & MERV 13 AIR FILTRATION



SECURE BIKE LOUNGE WITH LOCKERS



EASY ACCESS TO CALTRAIN, VTA, AND BART



ACROSS THE STREET FROM SAN PEDRO SQUARE



STEPS FROM NUMEROUS DOWNTOWN AMENITIES

RETURN

Discover light-filled workspaces and high-end finishes. New tenant lounge and conference rooms provide additional opportunities for spaced collaboration or quiet reflection.



HUB 160 AMENITY CENTER

160

West Santa Clara

CONFERENCE ROOM AND TRAINING CENTER

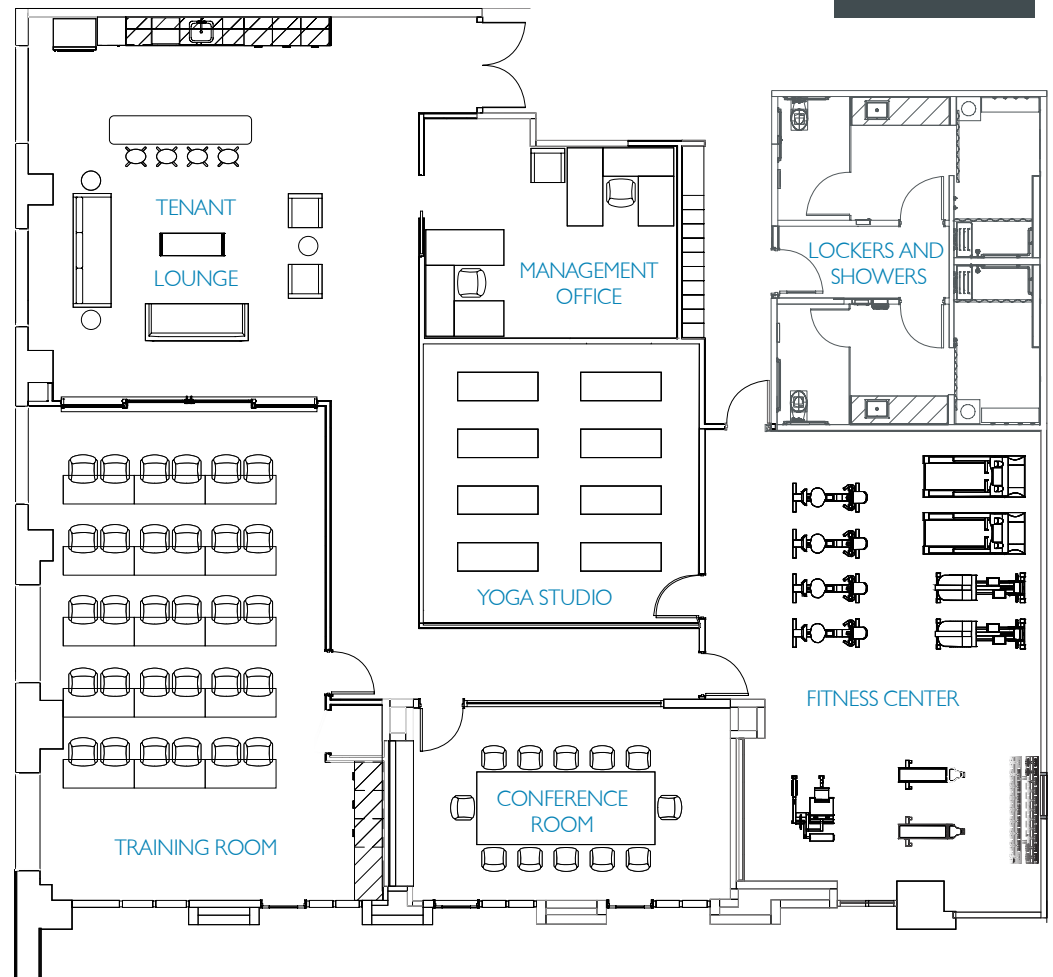
The conference room offers a 12-person boardroom with additional configurations accommodating up to 37 occupants. The training center accommodates 30 people. Both are fully equipped with audio/web conferencing capabilities with a digital display.

TENANT LOUNGE

The new tenant lounge design is accented with comfortable seating and a cafe' bar with a catering kitchen, all wrapped in a modern aesthetic -- perfect for meeting receptions, reserved tenant events or hanging out with co-workers.

FITNESS CENTER AND YOGA STUDIO

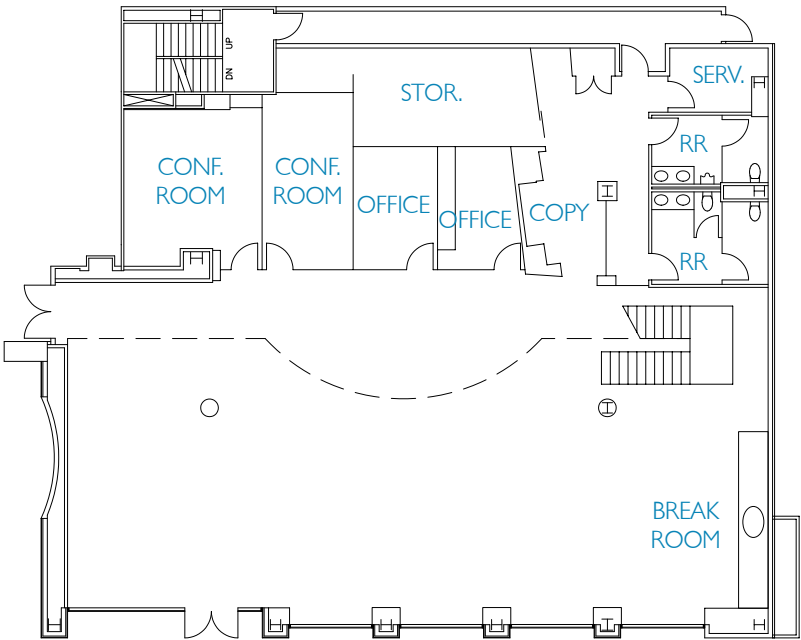
The new fitness center offers a workout room with state-of-the-art equipment, a yoga room, private restrooms and showers.



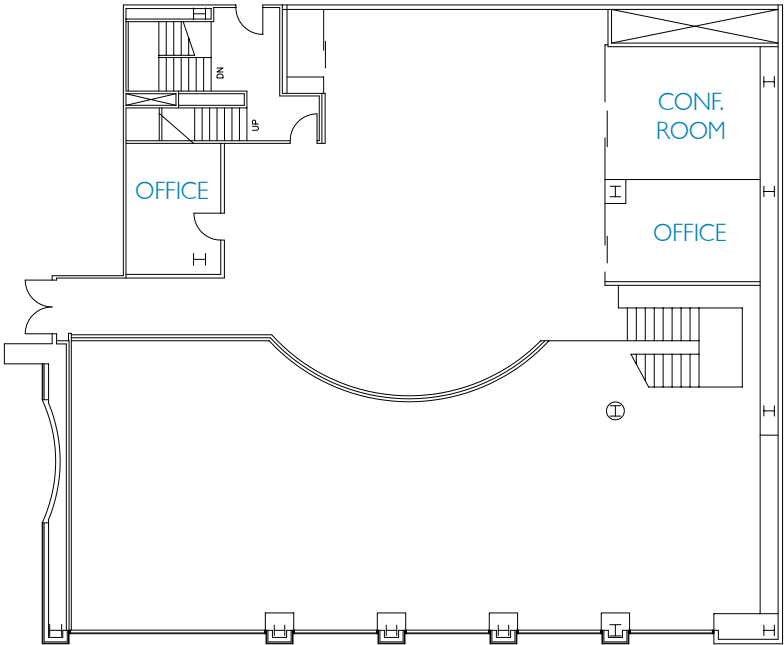
SUITE 101/102

±8,306 SF

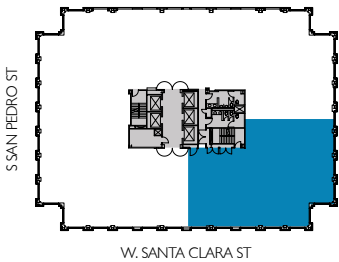
- 4 OFFICES
- 3 CONFERENCE ROOMS
- 1 SERVER ROOM
- 1 STORAGE ROOM
- 1 BREAK ROOM
- IN-SUITE RESTROOMS



FIRST FLOOR



SECOND FLOOR

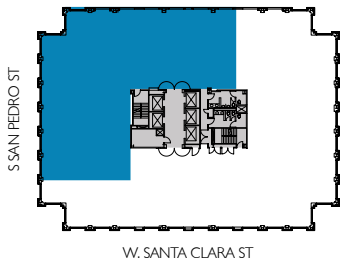
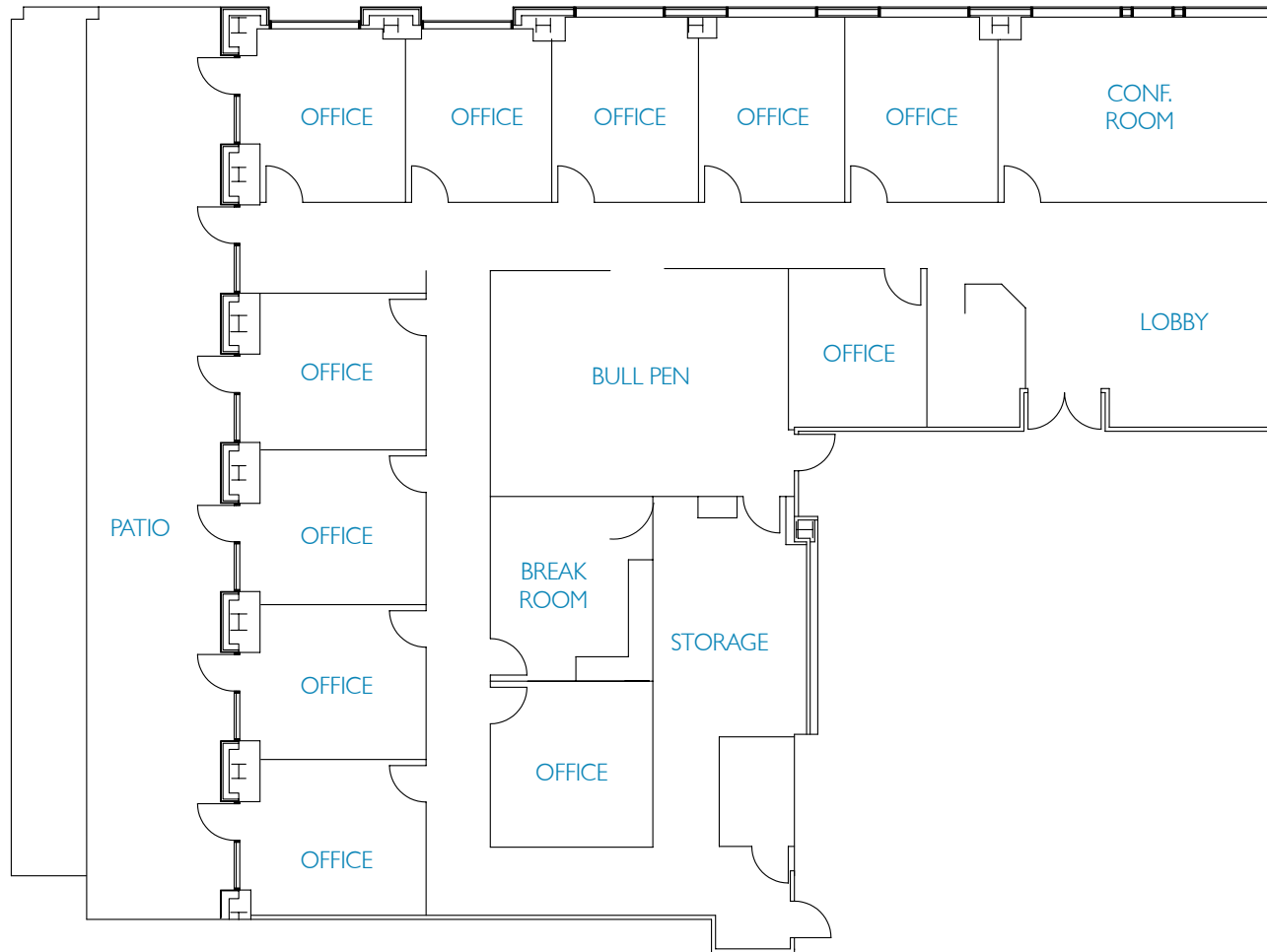


SUITE 400

±6,610 SF

- 11 OFFICES
- 1 CONFERENCE ROOM
- 1 BREAK ROOM
- 1 BULL PEN
- 1 STORAGE ROOM
- OUTDOOR PATIO

160
West Santa Clara



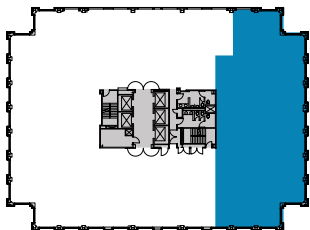
SUITE 525

±5,750 SF

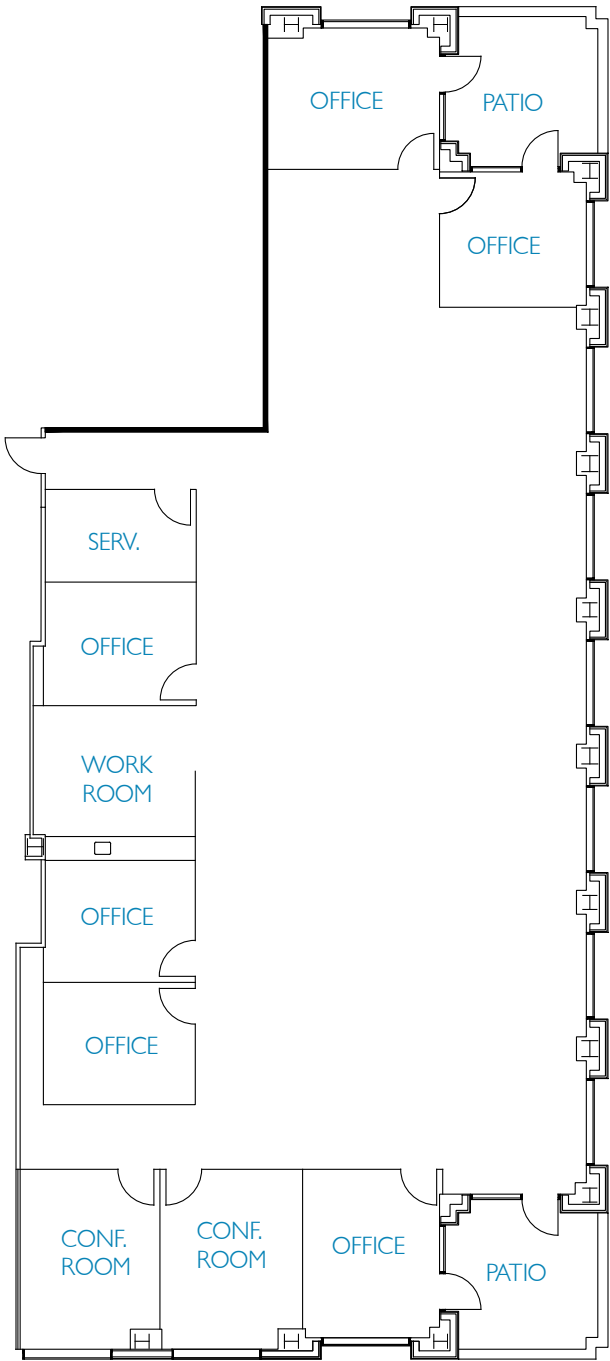
- 6 OFFICES
- 2 CONFERENCE ROOMS
- 1 WORK ROOM
- 1 SERVER ROOM
- OUTDOOR PATIOS



S SAN PEDRO ST



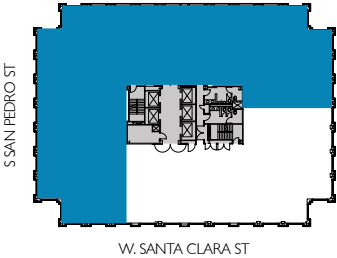
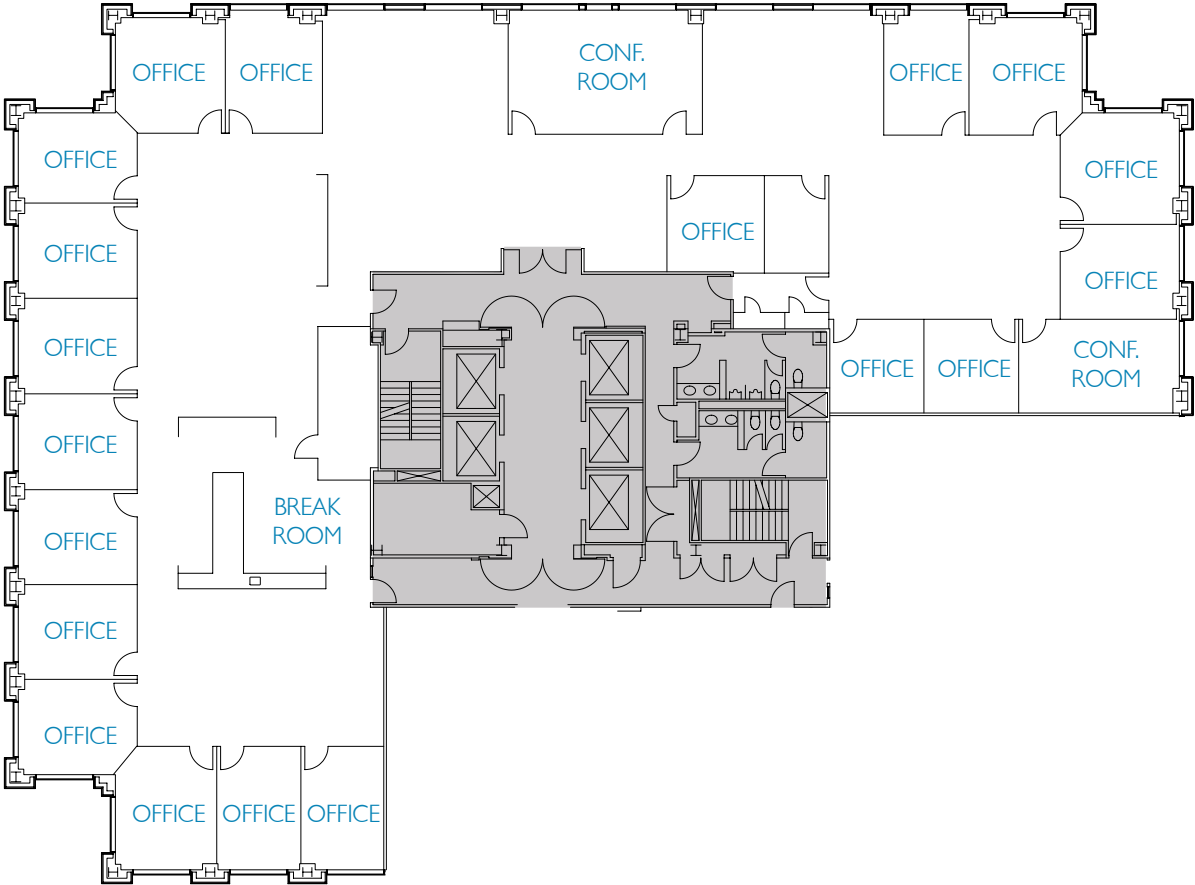
W. SANTA CLARA ST



SUITE 900

±11,585 SF

- 19 OFFICES
- 2 CONFERENCE ROOMS
- 1 BREAK ROOM



COMMON AREA

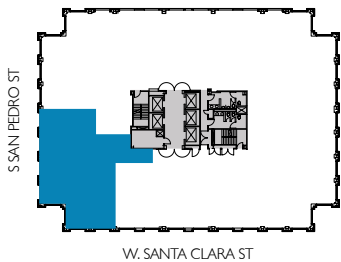


SUITE 1050

±2,717 SF
HYPOTHETICAL FURNITURE

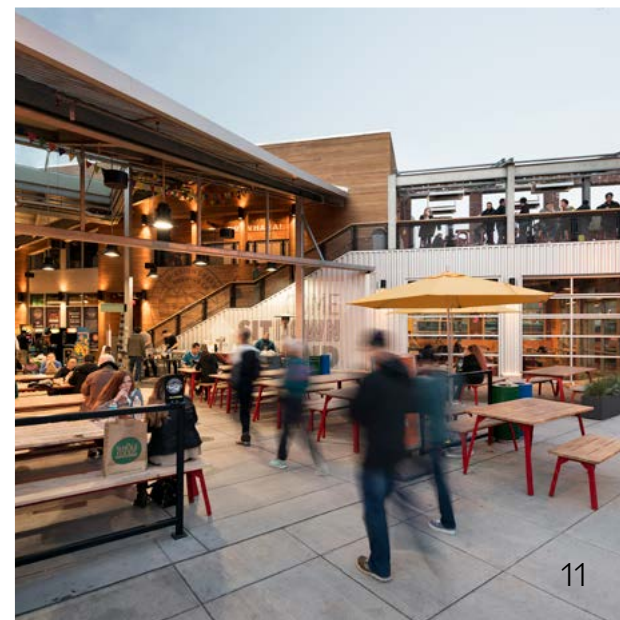
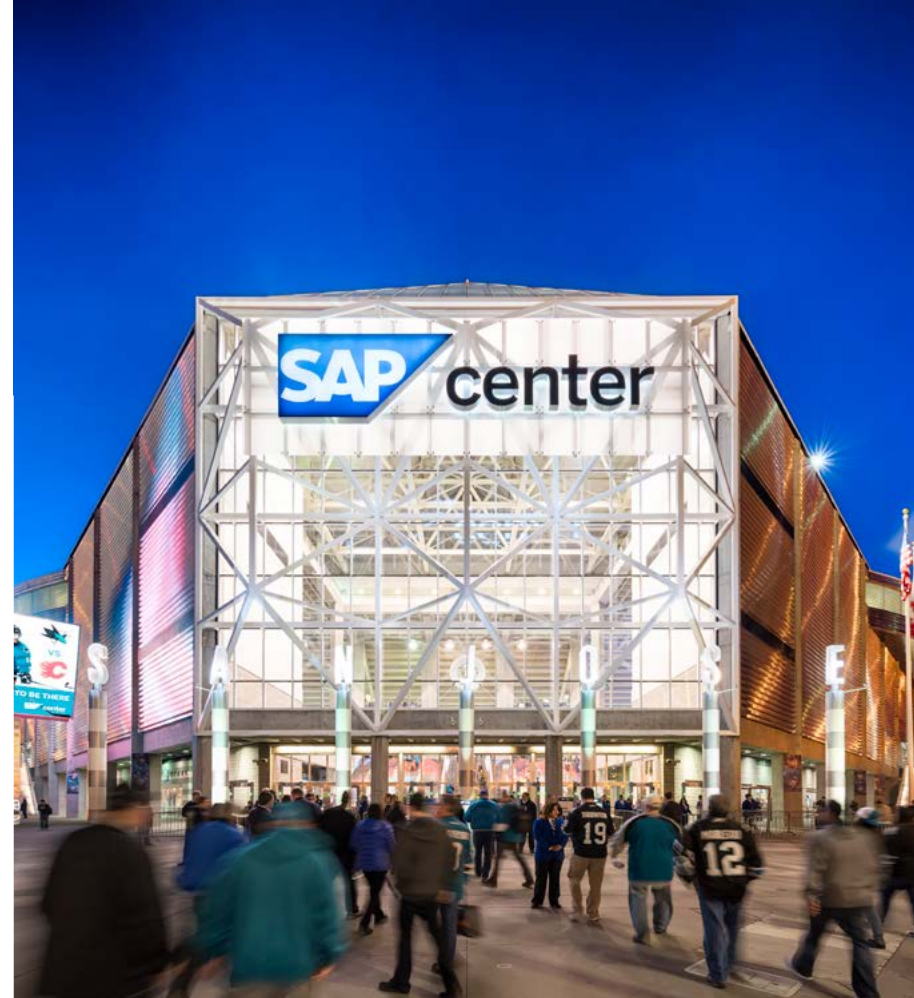
- 2 OFFICES
- 2 CONFERENCE ROOMS
- 1 BREAK AREA

[360° VIRTUAL TOUR](#)
(CLICK HERE TO VIEW)



RECHARGE

Across the street from San Pedro Square and surrounded by world-class dining, shopping and entertainment options, enjoy San Jose's dynamic and vibrant downtown scene.



RE-ENERGIZED NEIGHBORHOOD



106+
FINE DINING



45+
CASUAL DINING



17+
CAFES



1500+
HOTEL ROOMS



10+
APARTMENT PROJECTS



6+
CONDOMINIUM PROJECTS



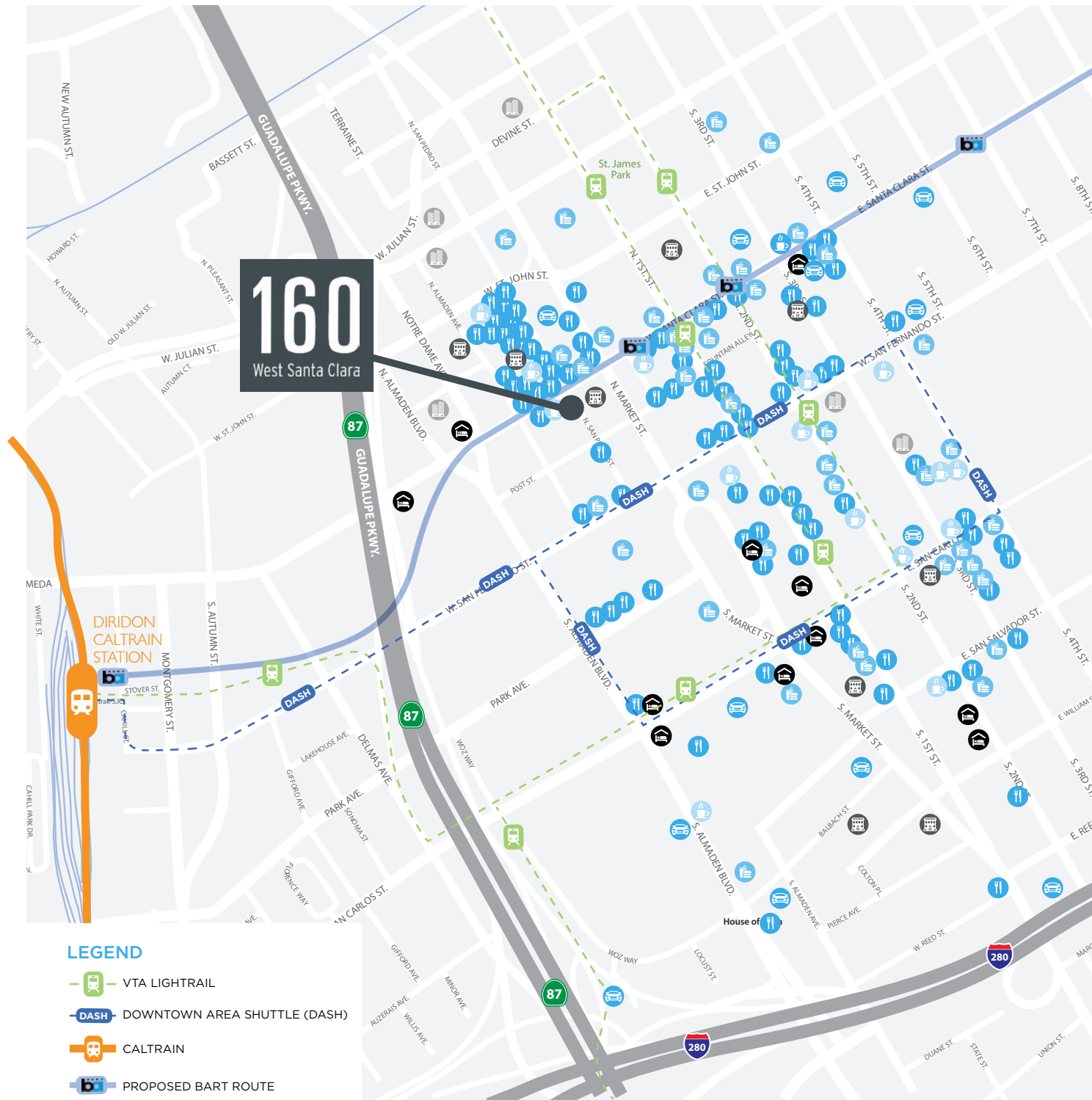
13+
PARKING GARAGES



80+
CALTRAIN WEEKDAY STOPS

LEGEND

- VTA LIGHTRAIL
- DASH - DOWNTOWN AREA SHUTTLE (DASH)
- CALTRAIN
- PROPOSED BART ROUTE



REFOCUS

Experience an emphasis on health and well-being, attracting top talent and improving employee productivity with a state-of-the-art wellness, fitness and yoga studio.





160

West Santa Clara

Return. Recharge. Refocus.

BRANDON BAIN

+1 408 615 3416

brandon.bain@cushwake.com

LIC #01308375

JEFF CUSHMAN

+1 917 575 4722

jeff.cushman@cushwake.com

LIC #01308295

ALEX LAGEMANN

+1 408 221 2310

alex.lagemann@cushwake.com

LIC #02024474



CENTURY | URBAN

[VIEW SITE SPECIFIC COVID-19 PREVENTION PLAN](#)

Cushman & Wakefield Copyright 2020. No warranty or representation, express or implied, is made to the accuracy or completeness of the information contained herein, and same is submitted subject to errors, omissions, change of price, rental or other conditions, withdrawal without notice, and to any special listing conditions imposed by the property owner(s). As applicable, we make no representation as to the condition of the property (or properties) in question.